

# Kaboodle



## OUR PHILOSOPHY

*Nurturing creative intelligence by balancing unstructured wonder with thoughtful programming.*

### ✓ FLEXIBLE GROUP PACKAGES

Scalable, age-specific zones and dedicated support with flexible scheduling to fit your school's needs.

### ✓ SAFE & SUPERVISED SPACES

A secure, facilitator-led environment where children safely explore, create, and learn.

### ✓ CURRICULUM-ALIGNED ACTIVITIES

Cultivating early childhood development, STEM, arts, and social-emotional growth through immersive, hands-on play.

OPTION	PRICE (Per Child)
Excursion	SGD 15
Excursion + Meal	SGD 20
Excursion + Meal + Messy Play	SGD 35
Teachers and/or Staff enter for FREE. Students are more than welcome to pack their own snacks. Our Bento Box: A delicious mix of pasta and crispy chicken tenders, served with a refreshing apple juice. Students are advised to carry anti-slip socks.	



[kaboodle.com.sg](http://kaboodle.com.sg)



+65 9126 1805



[play@kaboodle.com.sg](mailto:play@kaboodle.com.sg)

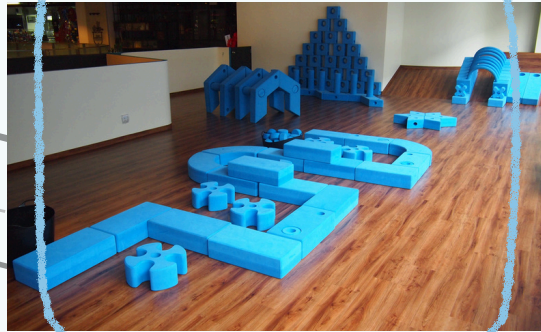
# SCHOOL EXCURSIONS @ Kaboodle

Build your imagination through creative play

1

## Arrive at Kaboodle

9:30 AM (Morning Slot)  
OR 2:00 PM (Afternoon Slot)



2

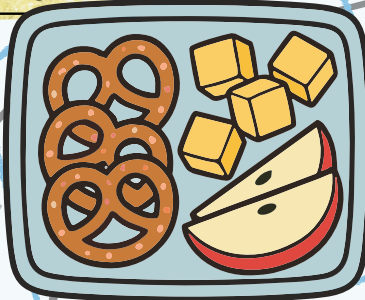
## obstacle course!

45-60 Mins

4

## Snack time

15-30 Mins



3

Explore our  
sensory set-up 40-45 Mins

5

## Say Goodbye!

11:30 AM (Morning Slot)  
OR 4:00 PM (Afternoon Slot)



[kaboodle.com.sg](http://kaboodle.com.sg)

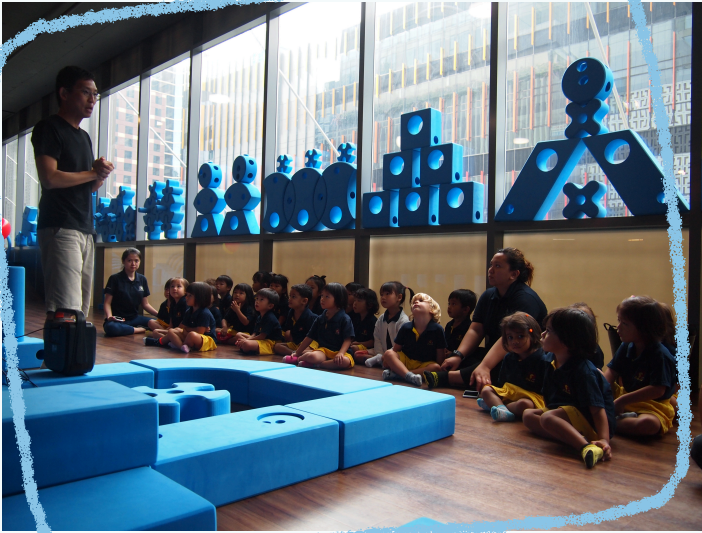


+65 9126 1805



[play@kaboodle.com.sg](mailto:play@kaboodle.com.sg)

# OBSTACLE COURSE



# SENSORY SET-UPS



Water tub



Coffee grounds



Ice tub



Sensory jars



Sensory bins



Messy Play

SCAN TO FIND OUT MORE

# Kaboodle

Build your imagination through creative play



[kaboodle.com.sg](http://kaboodle.com.sg)



+65 9126 1805



[play@kaboodle.com.sg](mailto:play@kaboodle.com.sg)